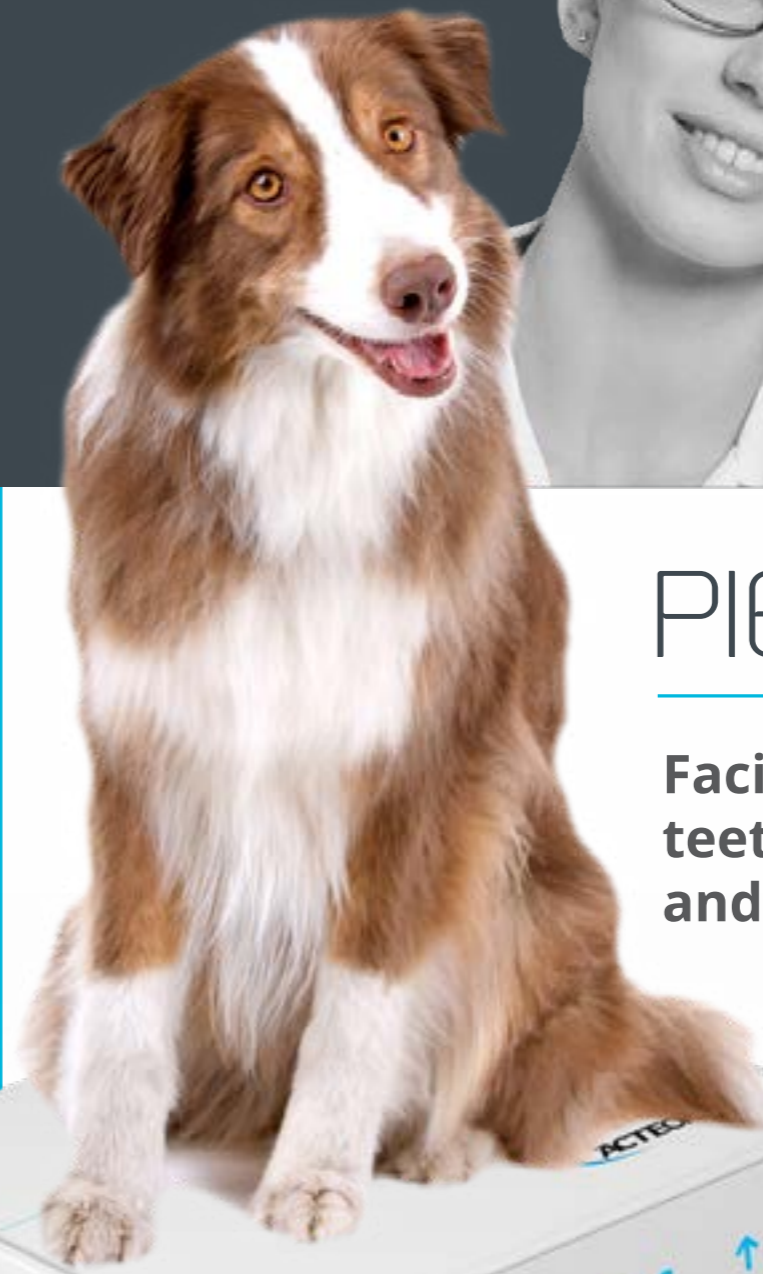


# SURGERY

MORE INVENTIVE  
LESS INVASIVE

ACTEON® is a pioneer, manufacturer and global leader in digital medical imaging and high-frequency ultrasonics, with its headquarters in France and distribution in 94 countries.

ACTEON® has strived to play a leading role in building a link between human and veterinary medicine, particularly dentistry, in order to improve standards of animal care.



PIEZOTOME  
CUBE

Facilitated  
teeth extractions  
and osseous surgery

1. Ultrasonic Piezotome® surgery: is it a benefit for our patients and does it extend surgery time? A retrospective comparative study on the removal of 100 impacted mandibular 3rd molar. A. Troedhan, A. Kurrek, M. Wainwright. Open Journal of Stomatology, 2011
5. Performance of ultrasonic devices for bone surgery and associated intraosseous temperature development. S. Harder, S. Wolfart, C. Mehl, M. Kern. The International Journal of Oral & Maxillofacial Implants, volume 24, number 3, 2009
3. EAO congress, ACTEON® Symposium. The Piezotome enabled flapless vertical alveolar crest-split and horizontal distraction. v. Prof. Dr. Dr. Troedhan, 2016
4. Sinus lift versus short implants: results of a prospective radiologic study and critical review of minimally invasive transcrestal sinus lift procedures. I. Schlichting, D. Lacina, B. Fischak-Treitl. Open Journal of Stomatology, 2017, 7, 1-24

Non contractual document - Ref. Dxxxxx - V1 - 06/2018 - Copyright © 2018 SATELEC. All rights reserved. No information or part of this document may be reproduced or transmitted in any form without the prior permission of SATELEC.

ACTEON®  
17 av. Gustave Eiffel | BP 30216 | 33708 MERIGNAC cedex | FRANCE  
Tel + 33 (0) 556 340 607 | Fax + 33 (0) 556 349 292  
E-mail: [acteonvet@acteongroup.com](mailto:acteonvet@acteongroup.com) | [www.acteongroup.com](http://www.acteongroup.com)



EN

Solutions for higher standards of care



# CLINICAL BENEFITS AT EVERY STAGE OF YOUR SURGERY



## EXPAND YOUR EXPERTISE

### PRE operative

#### CHOOSE THE REFERENCE<sup>2</sup>

Piezotome<sup>®</sup> becomes the most globally trusted brand to perform delicate bone surgeries.

### INTRA operative

#### IMPROVE TO YOUR TREATMENTS

Piezotome<sup>®</sup> Cube unmatched performance combined with the practitioner's clinical expertise paves the way for accurate, faster and atraumatic surgical procedures.

### POST operative

#### GIVE YOUR PATIENTS THE BEST

Improving patient care is our priority. Piezotome<sup>®</sup> surgery outclass traditional instruments with surpassing healing<sup>3</sup>, significantly less swelling, pain and complications in the clinical follow-up.

**When compromise is not an option, Piezotome<sup>®</sup> Cube is the easy way to give more to your practice and patients.**

## INTRA-OPERATIVE

### SAFETY

- Cutting selectivity: soft tissues are preserved (nerves, membranes and arteries)
- Intraosseous temperature under control

### COMFORT

- New automatic power control for smooth and effortless cut
- Easy bone access thanks to exclusive tips designs

«*Piezotome<sup>®</sup> surgery is superior in atraumaticity and soft-tissue safety [...] No lesions of the mandible nerve were detected with Piezotome<sup>®</sup> surgery.<sup>1</sup>*»

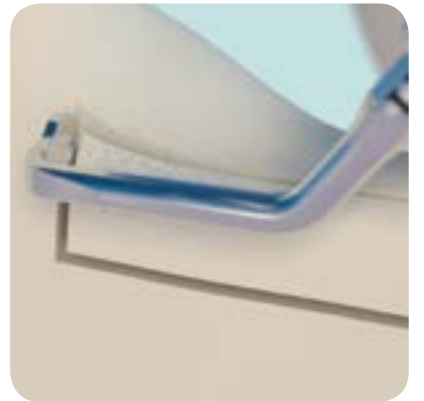
### PRECISION

- Fine and consistent cut on all types of bone
- Minimal bone loss for less invasive procedure

### VISIBILITY

- Stable irrigation flow
- Cavitation spray: microbubbles releasing oxygen limiting the bleeding (hemostatic effect)

«*The Piezotome<sup>®</sup> produced the smallest increase in intraosseous temperature.<sup>2</sup>*»



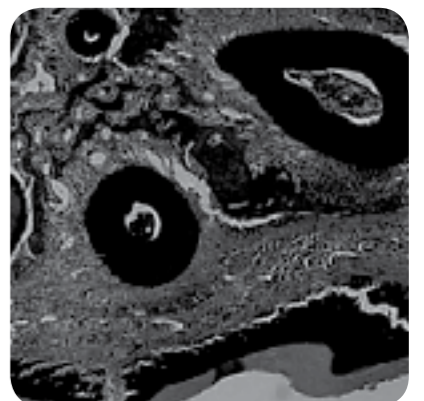
## POST-OPERATIVE

### BETTER RESULTS

- Reduced pain
- Less analgesics
- Limited edema

### GREAT HEALING

- Reliable
- Fast recovery
- Bone densification





# MORE POWER THAN EVER

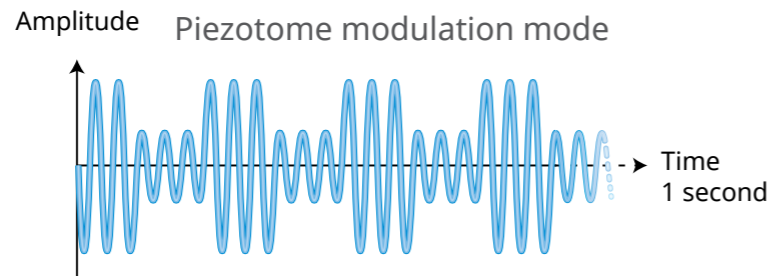
## NEUTRON TECHNOLOGY

ACTEON® Piezotome® ultrasonic power generators are piloted by the patented **Newtron® technology**. The advanced electronics, the handpiece and the tips are perfectly tuned introducing maximal performance and unique clinical benefits, to tackle each surgical procedure.calmly

### MODULATION

Alternation between high and low intensity frequencies

- ▶ Soft tissue preservation with better tissue recovery and cell regeneration



### FREQUENCY

Automatic adjustment 28-36kHz according to each tip's shape and weight

- ▶ Maximal performance for each procedure



### POWER

Automatic power regulation depending on the resistance encountered

- ▶ Continuous vibration even in dense bone



### CUBE LED HANDPIECE

**Upgraded conception based on ACTEON® 6 ceramic rings**

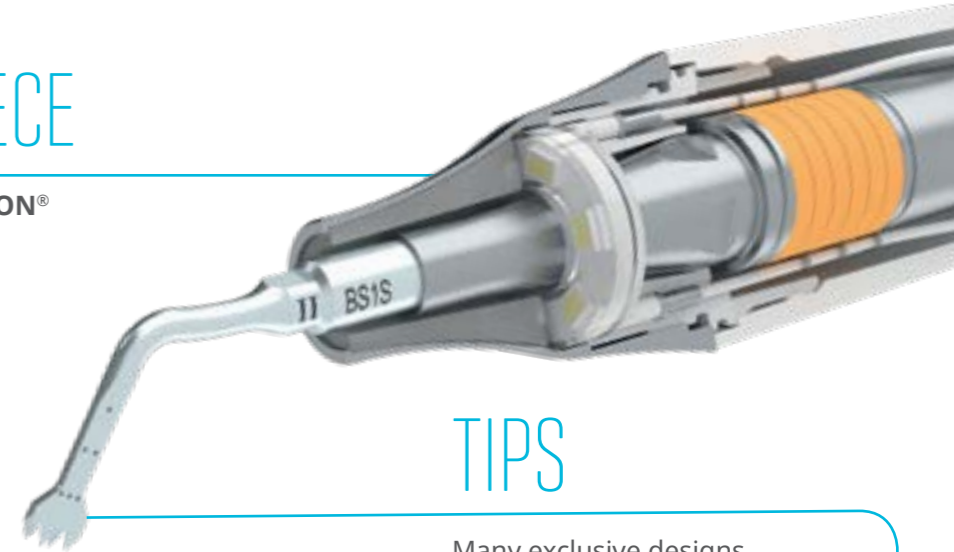
- ▶ More power than ever

Lighter with perfectly balanced design

- ▶ Natural gesture, rotation free for less hand fatigue

Full white color LED ring

- ▶ Great tissue distinction and posterior areas visibility



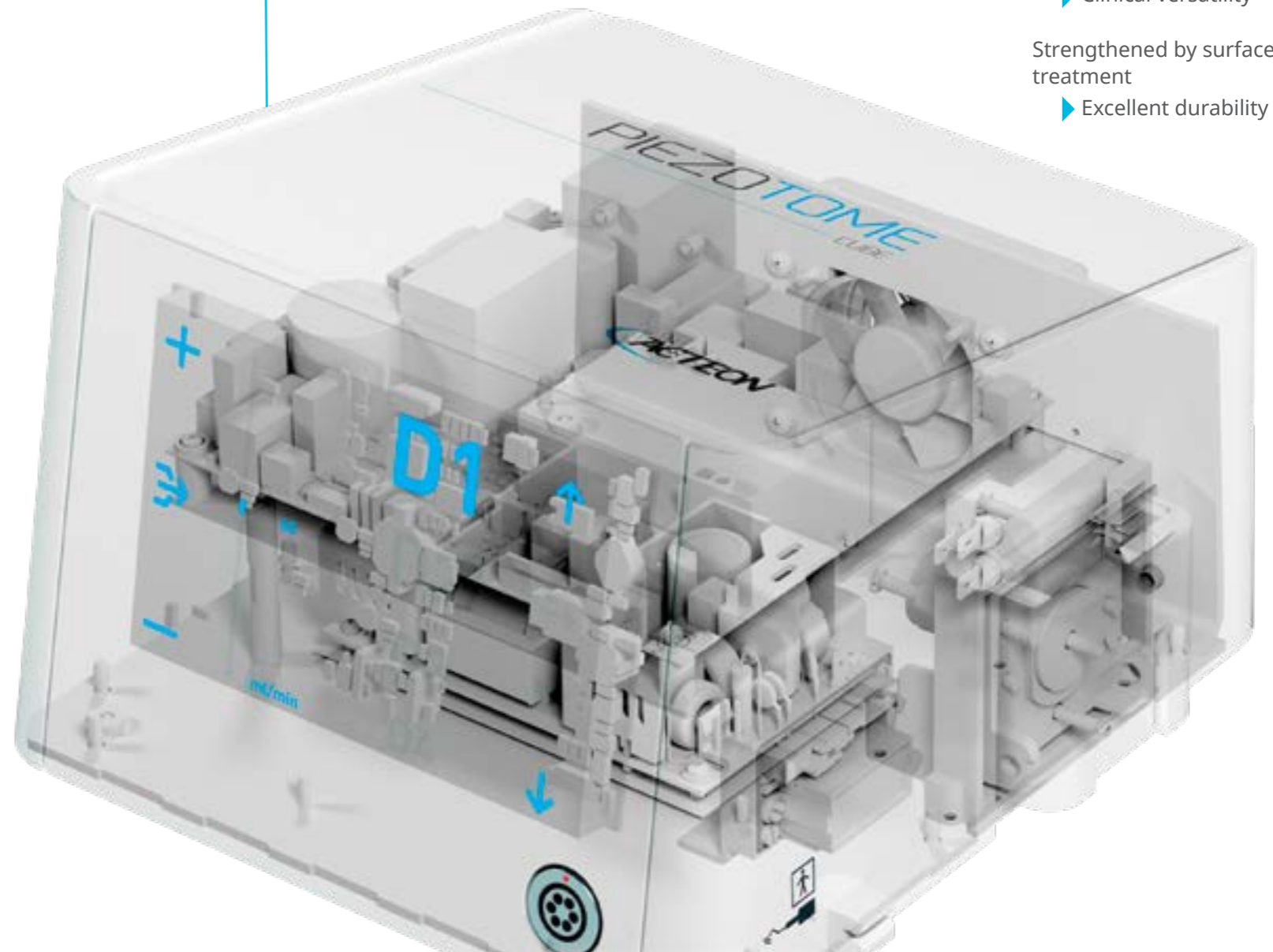
### TIPS

Many exclusive designs

- ▶ Clinical versatility

Strengthened by surface treatment

- ▶ Excellent durability





# ADAPTED TO YOUR NEEDS

## NATURALLY INTUITIVE

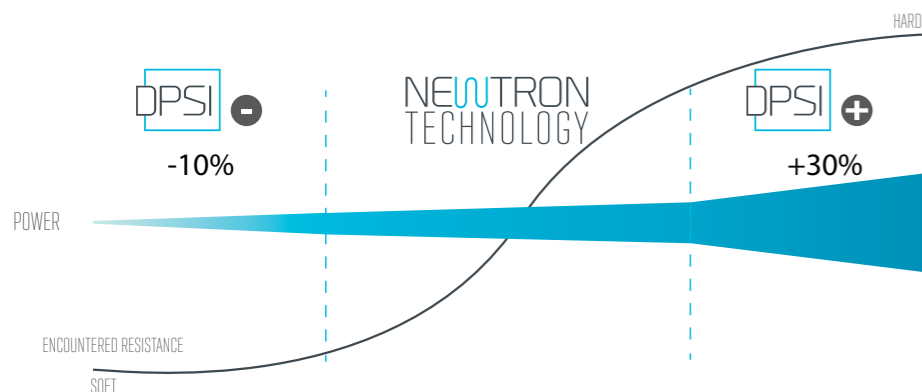
**DPSI** Dynamic Power System Inside  
**POWER INTUITIVELY ADAPTED FOR MAXIMUM EFFICIENCY & SAFETY**

According to the resistance encountered, the D.P.S.I. smart assistance will:

- ▶ Increase **+30%** the power, improving cutting performance
- ▶ Decrease **-10%** the power, to be even safer on soft tissues

### WITH THE D.P.S.I., GET

- ▶ **The most advanced Newtron® technology** with continuous monitoring of major criteria (pressure applied, tips designs and bone density)
- ▶ **Immediate power responsiveness**
- ▶ **Special starting boost** for effortless cutting performance whatever the load applied



## TOTAL ADAPTABILITY

Autoclavable handpiece holder with 2 positions protecting from accidental fall:

- "Clip" table
- "On" table



## BOLD STYLE

- Touch and operator oriented screen for continual control of major settings
- Compact unit
- Perfect aseptis

## ABSOLUTE CONTROL

Weighted multifunctional footswitch





# ACTEON® MAKES THE DIFFERENCE



## MAKE IT EASY

- Pump with precise adjustment (ml/min) and regular flow controlled reaches the tip's end
- Intuitive insertion of the irrigation line in the pump
- External irrigation line extending the handpiece life
- Autoclavable irrigation lines (single use available upon request)



## DURABILITY

Piezotome® Cube accessories are designed, with robust and durable materials such as stainless steel, minimising the use of plastic. A willingness of ACTEON® to offer you a clinical accessory for the .foreseeable future



### FAST ASSEMBLY SYSTEM

- Saves valuable time
- Robust stainless steel dynamometric wrench



### PERFECT ASEPSIS

- Easy maintenance
- Direct access to all parts
- Meeting hygiene constraints



### ESSENTIAL KIT

The 6 fundamental ACTEON® tips  
BS1S, BS4, SL1, SL2, SL3, LC2  
Ref. F87528

## EASIER PROCEDURE

- Effortless cut, with less demanding arm strength
- Better visibility (no use of contra-angle head)
- Improved tactile sense and temperature control



# MULTIPLE USE



**EXTRACTION**  
**Syndesmotomy**  
 For maximum bone preservation  
*LC1, LC1-90°, LC2, LC2L, LC2R, Ninja® tips*  
 Ref. F87546



**BONE SURGERY**  
**Osteotomy/Osteoplasty**  
 Clean and thin cut for maximal bone volume  
*BS1S, BS2L, BS2R, BS4, BS5, BS6 tips*  
 Ref. F87509



**SINUS LIFT**  
**Lateral Sinus Lift**  
 Unbeatable comfort:  
 selective and hemostatic cut  
*SL1, SL2, SL3, SL4, SL5 tips*  
 Ref. F87519



Caudal osteotomy of the mandible

« 50% decrease in pain and swelling was detected with Piezotome surgery. »



**CREST SPLITTING**  
 Rapid and minimally invasive technique for controlled expansion  
*CS1, CS2, CS3, CS4, CS5, CS6 tips*  
 Ref. F87567



**INTRALIFT™**  
**Crestal Sinus Lift**  
 Minimally invasive surgery for smooth sinus floor fracture  
*TKW1, TKW2, TKW3, TKW4, TKW5 tips*  
 Ref. F87536

« Minimum of time-effort, least risk of failure and lowest possible level of patient morbidity. »



**TPLO (Tibial-Plateau-Levelling-Osteotomy)**  
 Minimal incisions, minimally invasive  
*BS1, BS1L, BS2L, BS2R, BS2LXL, BS2RXL, BS6, BS6XXL*

« Flapless crest splitting and widening techniques can be applied to alveolar ridges with widths of only 1mm due to the bone preserving benefits provided. »

and more!  
 Request our dedicated  
 Tips catalogue